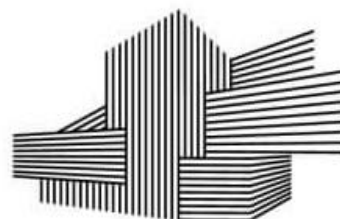


CORPORATE PROFILE

proudly serving business in:



Challeng. Group



Contents

Welcome	2
Introduction.....	3
Business Approach.....	3
Mission	4
Ethics	4
Vision	4
Core Values	4
Business Philosophy.....	1
Sustainability	1
Health, Safety and Environmental Awareness.....	1
Continuous Improvement.....	1
Project Experience	3
Challeng. Group (Pvt) Limited Organizational Structure.....	5
Our Team.....	5
Partnerships and Affiliations	7
Business DATA.....	8
Team Resumes	9
Legal Documents.....	10
Project Gallery.....	11



NOTICE TO THE RECIPIENT OF THIS DOCUMENT

*The information contained herein is considered proprietary and confidential information of **ChallENG. Group (PVT) Limited**, and its release would offer substantial benefit to competitors offering similar services. Therefore, the use or release of the information contained in this document for purposes other than an evaluation of its contents as a basis for contract award is prohibited.*

*Copyright 2017 **ChallENG. Group (PVT) Limited** all rights reserved. No part of this document may be reproduced by any means or transmitted without the prior written permission of **ChallENG. Group (PVT) Limited** except with respect to copies made or transmitted internally by you for the purpose of evaluation. All copies of this document (or any portion hereof) and any accompanying electronic copies should be returned to **ChallENG. Group (PVT) Limited** or, at **ChallENG. Group (PVT) Limited** option, destroyed at the end of the evaluation period.*



Welcome

We appreciate you taking time to go through the **ChallENG. Group (PVT) Limited** company profile. This is a great opportunity for us to communicate our services and key competitive strengths to you.

This profile is designed to provide you with an introduction to **ChallENG. Group (PVT) Limited**, and we hope and look forward to meeting our clients personally to develop a relationship through one – on – one interaction shortly.

Since our inception in South Africa in 2017, we have developed a trusted and reliable Engineering consultancy company by building relationships with clients, employees, suppliers, partners and subcontractors. With over eight (10) years of work experience under our Engineering teams belt, we will continue to learn, and build from this experience.

We thank all those who have contributed to the development of **ChallENG. Group (PVT) Limited**, and for your interest in our Company, and we look forward to working with you.

Chikondi Jamal Kaphweleza Banda

Managing Director - ChallENG. Group (South Africa)



Introduction

ChallENG. Group (PVT) Limited was established and incorporated under the South African Company Act in 2017 in Kwazulu-Natal, mostly to undertake works on Engineering Consultancy, Procurement, Construction and Project Management. The company will evolve to being a diverse construction, infrastructural management and service delivery firm.

We boast established and growing international partnerships and client base engaged in the construction and infrastructure delivery sector.

Our history date back to 2011, with the establishment of RM Enterprise Limited in Malawi, we maintain the same team and performance background in the services and products we deliver on the Market and we bring the same expertise on the South African infrastructure Market.

Business Approach

The company's business approach is encapsulated in its key competence of structural and civil engineering, transport infrastructure, architectural services and building information modelling (BIM), and project management.

Quality management is the pivotal point for ChallENG. Group (PVT) Limited business approach, operational, and organizational culture.



People



Performance



Risk



Strategy



Corporate
Governance

Mission

Following more than 6 years of experience in the field of Engineering, Construction and Management we can ascertain that we can change the world by reinventing the methods and procedures of executing projects for our valued clients allowing in both quality, durability and cost effectiveness .With great expertise in Advanced Technical, Scientific, Economic, Management and Safety standards.

Ethics

We endeavor to adhere to the highest ethical standards in the industry. We have been accepted by the construction industry as a trustworthy business by being consistently associated with integrity, high standards and quality of service and personal attention to clients.

Vision

ChallENG. Group (PVT) Limited has a vision to become one of the largest engineering and project management consultants in Kwazulu-Natal by 2025 with established bases in Cape Town and Johannesburg. And continental operations in Zambia, DRC, Tanzania and Mozambique respectively.

Core Values

ChallENG. Group (PVT) Limited is completely dedicated to the ongoing improvement of its core activities. The personal development of our team is encouraged and promoted in the technical and scientific fields, since these are the core parts of our business. The following are our core values:

- Technical and Practical competence
- Teamwork
- Time keeping and accuracy
- Competence
- Leadership and Team
- International Expert support
- Integrity
- Ethical Codes of Conduct
- Professionalism
- Customer Welfare
- Financial Confidence

Business Philosophy

The engineering industry encompasses a vast array of services, from Civil Engineering, Architecture, and Survey to various forms of technical support. This industry is always growing as new technology and methods are being developed and Engineering techniques are being refined.

Using these technologies and techniques we aim to be at the forefront of the Engineering industry in South Africa.

The engineering industry is at the point where client satisfaction is a key factor. We at **ChallENG. Group (PVT) Limited** aim to keep in-line with this mentality.

Sustainability

ChallENG. Group (PVT) Limited earmarks social economic development strategy of communities in which project catchment area, we cater to equip the resources, support and skills that ultimately lead to better livelihoods.

ChallENG. Group (PVT) Limited aims at allocating 1% of its net profit after tax and relevant levies on community based projects and non – profit organizations. The company's key programs are focused on the following:

- **Education and Training:** with particular focus on “city and guilds”, project and innovation management, environmental and ecosystem management and building information modelling (BIM).
- **Social Development:** investing in community development programs, HIV/AIDS awareness and other emergency – related initiatives such as disaster relief management.
- **Economic Development:** with particular emphasis on promoting the sustainable creation of employment particularly for marginalized and unskilled groups such women and youth.

Health, Safety and Environmental Awareness

ChallENG. Group (PVT) Limited emphasizes on safety, health and environment (SHE) policy and practices as documented by the ISO Standards. The company focuses on zero – harm philosophy towards people, host communities and the environment.

At **ChallENG. Group (PVT) Limited** we understand that accidents are prevented through cautious planning, appropriate training, and cooperative efforts in all areas of our operations. All our work is performed in the safest possible manner.

The challenges and advancements faced by the construction industry are unique in terms of safety. When methods and techniques have improved in a manner that consistently increasing efficiency and productivity, the accident incidence for construction continues to be a concern, particularly as high- rise buildings are being constructed throughout Male'. Effective preventative measures are therefore always identified and implement at all our work sites.

Continuous Improvement

ChallENG. Group (PVT) Limited has a tradition of fine performance, founded on a commitment to performing within budget and according to specifications. Through this process, we remain steadfast in our tradition to deliver superior performance, attention to safety issues, satisfaction to our customers and fulfillment for our employees.

OUR SERVICES

At **ChallENG. Group (PVT) Limited**, We provide technical Engineering services such as Civil Engineering, Architectural Engineering, Civil construction works, Building construction works, IT Infrastructure Design (Networks), Quality Assurance , Project supervision ,Project Management, Planning Control ,QS Services ,interior Designs and 3D impressions, Procurement, Contracting and Contract Management, Due Diligence ,Site Analysis

sub-disciplines including: environmental engineering, geotechnical engineering, control engineering, structural engineering, transportation engineering, municipal or urban engineering, water resources engineering, materials engineering, construction surveying,

As a full-service engineering consultancy company, **ChallENG. Group (PVT) Limited** essentially assists clients from the very outset to the completion of their projects. We become partners with our clients in understanding the five basic functions of:

- Defining and establishing the scope of the construction projects
- Pre-construction project planning including preparation and scheduling of the projects, phasing plans, budgeting/cost-modeling, subcontractor qualification etc.
- On-site execution of the project includes scheduling, quality control, safety management, subcontractor management, status reporting and change management
- Monitoring and controlling the project
- Closing of the project related to the post construction activities

Project Delivery Methods

ChallENG. Group (PVT) Limited builds on a diverse range of projects for both government and private clients under a variety of project delivery methods including:

- Lump Sum bid from completed drawings
- Construction Management
- Design-Build Development
- Pre-construction Services
- EPC Turnkey Projects

Project Experience

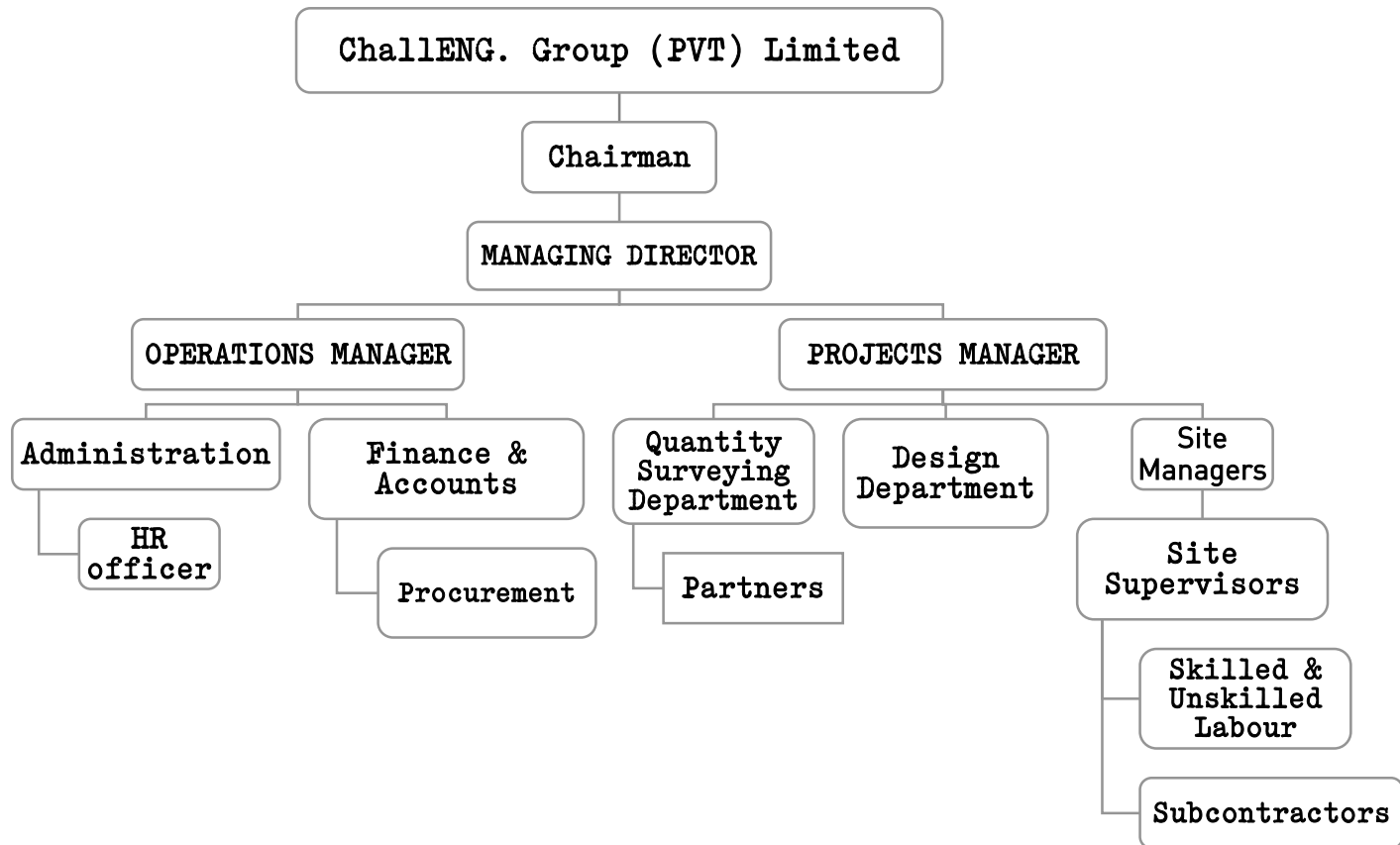
ChallENG. Group (PVT) Limited diverse portfolio includes new constructions. Some of the major projects carried out by us, General experience of our engineering firm for the last 5 years – Major Works

S/N	Contract Details	Client Name	Address of Client	Project Duration	Total Project Cost
1	Design and Construction, Installation Culverts, Stream crossings	SAPPI, Southern Africa.	P.O. Box 13124 Cascades 3202	Feb 2017- April-2017	ZAR 298,344.92
2	Design and Supervision of Malawi Bureau of Standards Offices,	Malawi Bureau of Standards	Blantyre Malawi	Jan 2016 – Dec 2018	\$17,297,222.22
2	Design and Supervision of Espanor Vocation Training Institute in Milange, Mozambique	Burgland Charitas & Esparanga ParaNovo Rebento	P.O. Box 72, Muloza Milange Mozambique	Jan 2014- June 2016	€ 752,800.00
3	Design and Supervision of ECOM Vocation Training Institute and Boundary wall in Blantyre, Malawi	Burgland Charitas & Hiefer Fur Breider	EVTI P.O. Box 2704 Blantyre Malawi	June 2014 – Jan 2015	€ 102,865.14
4	Design and Supervision of PRESSCANE Ethanol Plant Expansion in Chikhwawa, Malawi	Presscane Ltd.	Presscane P.O. Box 236 Chikhwawa Malawi	Octo 2015 – July 2016	\$ 320,000.00
5	Sectional Design and Supervision of Milange to Benifica Road in Mozambique, Zambezia Province	Elevo Group and Nicholas O'Dyer	Elevo Group Zambezia Sept Abril Barrio Mozambique	Feb 2014 – Dec 2015	\$ 2,555,865.00
6	Design and Supervision of Construction of Interior Works for Unilever Head Office in Blantyre, Malawi	Unilever Malawi	Unilever Mw P.O. Box 1515 Limbe Malawi	June 2015 – Sept 2015	\$ 162,833.85
7	Design and supervision of Soche East Shopping Mall in Blantyre, Malawi	Thofu Investments	Thofu Invest. P.O. Box 31928 Chichiri, BT, Malawi	In Progress	\$ 685,750.00

Relevant Experience of the firm for the during the last 5 years

S/N	Contract Details	Client Name	Address of Client	Project Duration	Total Project Cost
1	Design and Supervision of Espanor Vocation Training Institute in Milange, Mozambique	Burgland Charitas & Esparanga ParaNovo Rebento	P.O. Box 72, Muloza Milange Mozambique	Jan 2014-June 2016	€ 752,800.00
2	Design and Supervision of ECOM Vocation Training Institute and Boundary wall in Blantyre, Malawi	Burgland Charitas & Hiefer Fur Breider	EVTI P.O. Box 2704 Blantyre Malawi	June 2014 – Jan 2015	€ 102,865.14
3	Design and Supervision of Construction of Interior Works for Unilever Head Office in Blantyre, Malawi	Unilever South Esat aFrica Malawi	Unilever Mw P.O. Box 1515 Limbe Malawi	June 2015 – Sept 2015	\$ 162,833.85
4	Design and supervision of two office blocks in Mwita and Dyeratu in Chikhwawa, Malawi	Mr. H.B. Moloko	Michiri View Schools P.O. Box 3108, Blantyre Malawi	In Progress	\$ 685,750.00
5	Design and supervision of Soche East Shopping Mall in Blantyre, Malawi	Thofu Investments	Thofu Invest. P.O. Box 31928 Chichiri, BT, Malawi	June 2014 – Mar 2016	\$ 225,345.00

Challeng. Group (Pvt) Limited Organizational Structure



Our Team

ChallENG. Group (PVT) Limited has been able to establish itself in engineering consultancy and infrastructure construction industry partly because of the sound management principles the company has followed throughout its development. Apart from the projects that we manage, meticulous planning and expert know-how goes into the management of the company itself. The directors and the Engineers are well conversant with good corporate management, all members are experienced, and have a thorough understanding of the issues involved for the smooth and successful running of a company.

South Africa(ChallENG. Group (PVT) Limited)

S/N	POSITION	NAME
1.00	Managing Director(SA)	Mr. Chikondi J K Banda
2.00	Deputy Managing(SA)	Eng. Ntobeko N. Sithole
3.00	Project Manager/Engineer(SA)	Eng. Rodney M. Mshali
4.00	Senior Design Engineer (SA)	Eng. Michael Mshali
5.00	Project Architect-Working Drawings	Arch. Maqoba S. Tshabalala
6.00	Project Architect-3D Designs	Arch. Lilitha Luswa

Malawi (RM Enterprise Limited)

S/N	POSITION	NAME
1.00	Design Engineer	Eng. Martin Chavula
2.00	Project Architect – Working Drawings	Arch. Sambirani Chirwa
3.00	Architect – 3Ds	Arch. Denis Kumwembe
4.00	Quantity Surveyors	Mr. Patrick Tarimo
5.00	Project Statistician and Economist	Mrs. Glory Mshali
6.00	Site Inspector	Mr. Mphatso Ntambo
7.00	Engineering Surveyor	Mr. Wezzie Ntambo
8.00	Project Administrator	Mr. Anderson Macheso
9.00	Busines Development Specialist	Mr. Enerst Zinyemba

Partnerships and Affiliations

ChallENG. Group (PVT) Limited has strategic working relationships and affiliations with both local and International reputable service providers, our goal is to deliver state of the art products and related services as a means of value adding and means of transferring critical engineering skills into the South African infrastructure industry. Some of our existing industry partners include:

working partners



affiliates/membership



We believe in bringing onboard experts to assist in implementation and professional input to all the complex projects.

BUSINESS DATA

Overview: Challeng. Group (PVT) Limited is currently located in Durban and Pietermaritzburg, Kwa-Zulu Natal and our operations under RM Enterprise Limited in Malawi and Mozambique where we conducts our businesses in both construction and turnkey contracts.

Business Trading Name:	Challeng. Group (PVT) Limited
Constitution of Legal Status:	Registered in 2017 in South Africa.
Company Registration Number:	2017/065985/07
Tax Registration Number:	9047834255
Supplier Identification:	R0013873931
B-BEE procurement Rating:	Level One
CIDB Registration Number:	Processing
NHBRC Registration Number:	Processing

Place of Registration:	Durban Kwazulu-Natal, South Africa
------------------------	------------------------------------

Principal Place of Business:	Durban, Kwazulu-Natal South Africa 57, Braiside Road Seaview, Durban 4094
------------------------------	---

Contact Number:	+27736230407(Pietermaritzburg) +27848963048 (Durban) +27724172424 (Johannesburg) +265999143772(MW) +265999183656(MW)
-----------------	--

Email:	infor@adconsult.biz
--------	---------------------

Website:	www.rmententerprisemw.com www.challeng.group.co.za
----------	---



Team Resumes



Curriculum Vitae: **Michael Mshali**

Executive Summary

Michael Mshali is a sincere, motivated and committed individual with a BSc(Civil Eng) from the University of Malawi, BSc(Hons)(Transportation) and MSc(Transportation) from the University of Pretoria.

Specialising in:

- **Highway Design**
- **Pavement Materials and Design**
- **Transportation studies/modelling/Traffic Engineering and**
- **Public transport**

He has over 16 years experience in Transportation planning, design and supervision of road and airport construction and maintenance works. He has gained vast knowledge and expertise in highway and airport design, pavement design as well as stormwater drainage systems analysis and design. He is also competent in traffic engineering including intersections and other private or public transport facilities layout and capacity analysis.

During his twelve years of experience, he has been involved in the design and supervision of numerous road construction, rehabilitation and maintenance projects. He has also been involved in design, tender documentation and evaluation for the construction and maintenance of stormwater drainage systems.

Michael has extensive experience in quality control through assessment of the suitability of materials for incorporation into permanent works and assisting in devising workable solutions where materials of specific specification are not available. He has been in quality control assignments involving ground investigations, sampling and testing of gravels for use on roads, assessment of crushed stones, asphalt and concrete mix designs, fresh and in-situ concrete testing.

He has exceptional project management and technical skills which are very crucial for the timely completion of projects within the budget and specifications.

Name

MICHAEL MSHALI

Curriculum Vitae: Michael Mshali

Profile

Vast experience in traffic engineering, highway design, pavement materials and design, road rehabilitation design, maintenance works and storm water drainage systems design. Thus, very conversant with design standards, general conditions of contract and specifications.

Personal Details

Gender:	Male
Marital Status:	Married
Physical Address:	Unit 23 Emerald close, 14 Lemonwood str. Eco Park ,Centurion
Postal Address:	P.O. Box 26, Menlyn, 0063
Contact Number:	0724172424
E-mail Address:	mshali_mike@yahoo.co.uk.
Criminal Record:	None
ID:	7512075972189
Health Condition:	Excellent

Formal Education

Date	Institution	Qualification Gained
2008	University of Pretoria	MSc (Transp) (Cum laude)
2007	University of Pretoria	BSc (Hons) (Transp.Eng) (Cum laude)
1999	University of Malawi, The Polytechnic	BSc. (Civil Eng) with credit

Additional Training

Date	Institution	Skill Area
2005	NCIC (Mw)	Design and implementation of Labour based road works
2004	NRA (Mw)	Environmental Impact Assessment

Professional Memberships

ECSA	Pr Eng (201370641)
SAICE	Member (MSAICE)
SAT	Member (Society of Asphalt Technology) (MSAT)
ICE-UK	Institute of Civil Engineers -UK- Graduate Member

Awards

Date	Achievement
2009	The SAICE Transportation Division Chairman's Award <i>"Best post graduate transportation engineering student in the Northern Transportation Centre of Development"</i>

Curriculum Vitae: Michael Mshali

Awards

2007	Winner of SATC2007 conference student competition essay - " <i>The role of transport policy and public participation in Traffic congestion management-The Case of N1-Ben Schoeman</i> "
1995-1999	Four time Recipient of David Livingstone Awards for being amongst the Best students in the Department of Civil engineering (University of Malawi)

Computer Literacy

Proficient in all Microsoft Office Tools.

Proficient in the following engineering programs:

- AutoCAD C3D, Hydro CAD, MS Project, Win DCP 5.0,EPANET,SSA

Employment History

Date	Organisation	Job Title
August 2014- todate	TUT	Lecturer (Part time) Traffic Engineering IV and Transportation Planning IV
March 2009 to date	Tshepega Engineering	Senior Design Engineer (Technical Director)
2009 to 2011	UNISA	Lecturer (Part time) Geometric Design and Pavement Design
Dec 2008-Feb 2009	Mphizi Consulting Engineers	Senior Engineer
Feb 2007 – May 2007	G11 Consulting Engineers (SA)	Resident Engineer
March 2004-Jan 2005	Mphizi sub-consultant to Africon	Highway Engineer
Feb 2002-June 2002	Mphizi/CSIR JV	Assistant Materials Engineer
2000 – Dec 2002	Mphizi Consulting Engineers (MW)	Civil Engineer

Employment Experience and Skills

Organisation:	Tshepega Engineering
Project:	Upgrading of provincial Road D1392in Steelpoort from Gravel to Bitumen (22 km)
Period:	March 2015 – June 2015
Role:	Design Engineer (Design Team Leader)
Job Description:	Responsible for Geometric design and production of design/construction drawings, Road marking layout, intersection capacity analysis and preparation reports.

Organisation:	Tshepega Engineering
Project:	Transportation Model (TIS) for Greater Princess Plot in Johannesburg
Period:	Sep 2014 – July 2015
Role:	Traffic Engineer
Job Description:	

Curriculum Vitae: **Michael Mshali**

Develop a Transport Model for the Greater Princess Plot extension in Johannesburg. The project entails assessing the proposed COJ housing department developments' trip generation, trip assignment, trip distribution and capacity analysis (by utilising the SIDRA 6.0 software), level of service, volume capacity ratio, delays and stacking calculations to determine the impact of proposed developments on the existing road networks.

Organisation:	Tshepega Engineering
Project:	Stormwater Management Plan for Drieziek Extension 3 and 5 (COJ)
Period:	Jan 2014 – July 2014
Role:	Design Engineer
Job Description:	
These project involved preparing a stormwater management plan as part of Stormwater Master Planning of Drieziek ext 3 and 5 in Johannesburg. This entailed preliminary wetland delineation, catchment discharge determination, capacity analysis of the existing drainage system, upgrades designs based on BMP for stormwater systems (including SUDs) and report writing.	

Organisation:	Tshepega Engineering
Project:	Upgrading of Bloemfontein Railway station. (R60mil)
Period:	March 2012 – May 2012
Role:	Traffic Engineer
Job Description:	
Bus parking and operation layout design involving parking area capacity assessment, manoeuvrability assessment, passenger Loading and offloading area design and preparation of Traffic Impact Studies for submission for approval to the Local Authority	

Organisation:	Tshepega Engineering
Project:	Rehabilitation of N14 (road P158/1) from Brankfontein Interchange to Potgieter in Pretoria (GDRT/SANRAL) (R180 Mil)
Period:	May 2011- 2012
Role:	Geometric Design/Traffic Engineer
Job Description:	
Responsible for Geometric design and production of design/construction drawings, Road marking layout, Interchange/intersection capacity analysis (upgrading of N14/Jean interchange and on/off ramps to Eeufees Interchange) and preparation reports.	

Organisation:	Tshepega Engineering
Project:	Stormwater Management plan and drainage system design for MCC in Midrand
Period:	Oct 2010 – 2011
Role:	Design Engineer
Job Description:	
These project involves preparing a stormwater management plan as part of SDP application for erven owned by MCC in Midrand. This entailed preliminary wetland delineation, catchment discharge determination, capacity analysis of the existing drainage system, upgrades designs based on BMP for stormwater systems (including SUDs) and report writing.	

Curriculum Vitae:

Michael Mshali

Organisation:	Mato Consulting Engineers sub-consultant to Zitholele Consulting Engineers
Project:	Pavement design of Access road to Driefontein (Muldersdrift) Waste water treatment Plant. (City of Johannesburg)
Period:	Dec 2010
Role:	Pavement Design Engineer
Job Description:	
Materials investigation, Pavement Design of the 4 km access road, preparation of pavement design report and pavement materials specification.	

Organisation:	Tshepega Engineering
Project:	Upgrading of selected intersections in City of Tshwane.
Period:	March 2009 – Dec 2011
Role:	Design/Traffic Engineer
Job Description:	
Design of improvement works to selected intersections – which entails investigation, simulation and re-design of several existing traffic intersections in order to improve the capacity, flow and safety of the identified intersections for the City of Tshwane Traffic Engineering and Operations Section.	

Organisation:	Tshepega Engineering
Project:	Traffic impact studies (TIS) for a private developers in Johannesburg
Period:	Oct 2012-Dec 2011
Role:	Traffic Engineer
Job Description:	
These projects assessing the proposed developments' trip generation, trip assignment, trip distribution and capacity analysis (by utilising the SIDRA 4.0 software), level of service, volume capacity ratio, delays and stacking calculations to determine the impact of proposed developments on the existing road networks.	
Projects successfully undertook include the following	
<ol style="list-style-type: none">1. TIS for the development of BP filling station in Chiawelo (Soweto) included 2 intersections2. TIS for a shopping centre in Ormonde (Johannesburg South) including 2 intersections3. TIS for ERVEN 1, 3 AND 4 CHISLEHURSTON TOWNSHIP in Johannesburg4. TIS for ERF 870 BRYANSTON TOWNSHIP in Johannesburg5. Etc (see table appended at the end)	

Organisation:	Tshepega Engineering
Project:	City of Tshwane - Flooding Backlogs and Upgrading of roads in Mamelodi, Eersterust and Pretoria Eastern area
Period:	March 2009 to date
Role:	Design Engineer
Job Description:	
Responsible for Geometric and stormwater drainage system design, production of design drawings, tender documents and reports and construction supervision.	

Curriculum Vitae: Michael Mshali

Organisation:	Tshepega Engineering
Project:	Upgrading of Wonderboom Airport
Period:	July 2009- Todate
Role:	Design Civil Engineer - Geometric and stormwater drainage system
Job Description:	
Involved in the geometric design of the Extension of the main runway 1129, aprons and taxi ways, preparing line marking layouts and development of a stormwater management master plan. Design of new Helipads and development of new area for hangers. Rehabiliatioan design of main runway 1129 and secondary runway 0624	

Organisation:	Mphizi Consulting Engineers
Project:	Detailed engineering Design for the upgrading from gravel to Class I bitumen standard of a 38km main trunk road-M7/M16 Lumbadzi-Dowa-Chezi Road
Period:	Nov 2007-Jan 2008
Role:	Highway Design Engineer
Job Description:	
Conduct route location surveys, direct and manage surveys, carry out geometric designs including horizontal and vertical alignment, cross sections, produce design drawings, tender documents and design report. Also assisted the materials engineer in coordinating materials sampling and testing, analysis and interpretation of laboratory test results and pavement design.	

Organisation:	G11 Consulting Engineers
Project:	Storm water drainage system design and construction (Lekwa local Municipality)
Period:	Feb 2007-May 2007
Role:	Resident Engineer
Job Description:	
Design and supervision of construction of the drainages structures; giving site instruction to Contractors, preparing monthly reports, approving quality of works, carry out site checks, checking Interim Certificates against completed works, designing and preparation of construction drawings, evaluating programme of works and advising the Contractor accordingly, monitoring progress of works and approving quality control.	

Organisation:	Mphizi Consulting Engineers
Project:	Traffic Count on Selected designated stations on the entire Road network in Malawi (NRA-MW)
Period:	Feb 2006 – September 2006
Role:	Traffic Engineer
Job Description:	
Responsible for managing the 7 day Traffic count for wet (February)and dry (August) seasons, Mobilise and organise the field team, supervise the field traffic counts, coordinate compilation and capturing into computers of the field data, compute the ADTs and prepare the traffic count reports.	
Organisation:	Mphizi Consulting Engineers

Curriculum Vitae: Michael Mshali

Project:	Routine Term Road Maintenance- Kasungu and Zomba Zones (NRA-MW)
Period:	October 2004 – September 2006
Role:	Highway Engineer
Job Description:	
Giving site instruction to Contractors, preparing monthly reports, approving quality of works, carry out site checks, checking Interim Certificates against completed works, designing and preparation of construction drawings, evaluating programme of works and advising the Contractor accordingly, monitoring progress of works and approving quality control.	

Organisation:	Mphizi (sub-consultant to Africon)
Project:	Bridge Deck Replacement and Drainage Improvement Works-Labour based works
Period:	March 2004 – September 2004
Role:	Highway Engineer
Job Description:	
Carrying out detailed bridge inventories, preparing designs and drawings, preparing schedules of quantities, carrying out tendering process and tender evaluation, issuing out instructions, preparing payment certificates and progress reports.	

Organisation:	Mphizi Consulting Engineers in association with CSIR
Project:	MaBaRM 1 st Year Design – Rehabilitation Works on M1 Lilongwe – Linthipe Bridge III, Bwengu–Chiweta Road and Karonga–Songwe Road (NRA-MW)
Period:	January 2004 – July 2004
Role:	Assistant Materials Engineer
Job Description:	
Assist the pavement specialist from CSIR in carrying out detailed drainage condition surveys, supervise deflection measurements, DCP tests, Trial pitting, data compilation, computation and analysis of test results and assisting project pavement specialising in interpreting materials test results based on SATCC Code of Practice.	

Organisation:	Mphizi (sub-consultant to Africon)
Project:	Bridge Deck Replacement and Drainage Improvement Works-Labour based works on Rural roads in Lilongwe, Mchinji, Kasungu, Dowa and Ntchisi districts- EU funded
Period:	February 2003 – December 2003
Role:	Highway Engineer
Job Description:	
Setting out of bridge and drainage structures, checking levels, bed preparation and fixing of reinforcement, ensuring that works met the specifications, preparing monthly reports, checking Interim Certificates against completed works, monitoring progress of works against programme of works and advising the Contractor accordingly, Managing the Works Contracts and assessing compensation by the Contractor for damaged crops and houses.	

Organisation:	EMC Jatula in association with Mphizi and Bua Consulting Engineers
Project:	Detailed Engineering Design of 80 km Mlowe-Usisya(M11) road (NRA-MW)
Period:	September 2002 – January 2003
Role:	Assistant Materials Engineer

Curriculum Vitae: Michael Mshali

Job Description:

Directing the soils survey team in carrying out field sampling including road alignment trial pitting, geotechnical investigation on bridge sites, borrow pit and quarry sampling, checking and coordinating laboratory tests carried out by the MoTPW Central Materials Laboratory. My duties also included compiling and analysing field and laboratory tests results, and assisting the Materials Engineer in preparing soils reports. Assisted the Materials Engineer in the design of pavement to Class I bitumen road. This involved extensive use of specifications outlined in the SATCC and TRL manuals.

Organisation: Mphizi Consulting Engineers

Project: Routine Term Road Maintenance on selected roads in Kasungu and Zomba Zones- (NRA-MW)

Period: May 2001 – September 2002

Role: Highway Engineer

Job Description:

Checking Interim Certificates against completed works, give site instructions to Contractors, designing and preparation of construction drawings, evaluating programme of works and advising the Contractor accordingly, preparing monthly reports, monitoring progress of works and approving quality control. Works involved Road patching, slurry sealing, chip sealing, gravelling, reshaping, road rehabilitation and bridge construction

Organisation: Mphizi Consulting Engineers

Project: On site design and supervision of construction of 22km Chikwina-Usisya Road. (NRA-MW funded by EU-Food Security programme)

Period: February 2000 – April 2001

Role: Civil Engineer

Job Description:

Assisting the Resident Engineer directing the design, survey and supervision teams in carrying out the topographic surveys, route location and setting out horizontal alignment, design road alignments, bridges and drainage structures and preparation of construction drawings and technical specifications, materials investigation involving field geotechnical surveys and laboratory testing, determining catchment areas to compute the discharge of rivers and streams, design and preparation of technical drawings and specifications for drainage structures including Armco culvert sizes, inlet and outlet structures, masonry and gabion protection structures.

List of Traffic Impact Studies that I have done and were approved by relevant Authorities;

Project (2010 to 2013)	Client	Approving Authority
------------------------	--------	---------------------

Curriculum Vitae:
Michael Mshali

Traffic Impact Study- Rivonia - ERVEN 1, 3 AND 4 CHISLEHURSTON TOWNSHIP	ZAMBROTTI INVESTMENTS 37 (Pty) Ltd & AFRO HELVETIA PROPERTIES (Pty) Ltd	City of Johannesburg
Traffic Impact Study- ERF 870 BRYANSTON TOWNSHIP	CHRISTINE YOUNG (PRIVATE DEVELOPER)-107 MOUNT STREET BRYANSTON	City of Johannesburg
Traffic Impact Study- Soweto- ERF 6576 THE ORLANDO AQUATIC CENTRE	CITY OF JOHANNESBURG	City of Johannesburg
Traffic Impact Study: Witkoppen	Imperial Properties (Pty) Ltd Dean Merredew 011-455-3411	City of Johannesburg
Traffic Impact Study: ERF 359 HYDE PARK EXTENSION 59, JOHANNESBURG	VENTICEL INVESTMENT (Pty) Ltd	City of Johannesburg
Traffic Impact Study: Ormonde Extension 19 Proposed rezoning of ERF561 to shops, warehouses, showroom and workshop	Metboard Properties Ltd , Tinie Bezuidenhout & Associates BETH HEYDENRYCH Phone : (011) 467-1004	City of Johannesburg
Traffic Impact Study: PROPOSED BP FILLING STATION ON ERF 74 OF CHIAWELO EXT 1 IN SOWETO	BP Africa Tinie Bezuidenhout & Associates BETH HEYDENRYCH Phone : (011) 467-1004	City of Johannesburg
Traffic Impact Study: PROPOSED BP FILLING STATION ON ERF28620 OF MEADOWLANDS ZONE 1 IN SOWETO	BP Africa Tinie Bezuidenhout & Associates BETH HEYDENRYCH Phone : (011) 467-1004	City of Johannesburg
Traffic Impact Study- EXTENSIONS 6, 7 AND 8 CROWTHORNE	HOLDINGS 75RE, 76 AND 77 CROWTHORNE AH	City of Johannesburg
Traffic Impact Study: PROPOSED TOWNSHIP ON REMAINING EXTENT OF PORTION 72 OF FARM PANORAMA NO 200 IQ IN WELTERVREDEN PARK EXT 155	FOSTER'S CONSOLIDATED MOTORS (Pty) Ltd Tinie Bezuidenhout & Associates BETH HEYDENRYCH Phone : (011) 467-1004	City of Johannesburg/ Gauteng Department of Roads and transports.
Traffic Impact Study: ERF 362 RADIOKOP	LIFE HEALTH WILGEHEUWEL Tinie Bezuidenhout & Associates BETH HEYDENRYCH Phone : (011) 467-1004	City of Johannesburg

STRUCTURAL ENGINEER/PROJECT MANAGER

GEng. Rodney M. Mshali
MSc. PM; BSc. CEng, Cert. Fin. Acc.

CURRICULUM VITAE

- 1. Position** Managing Partner (Design Engineer/ Project Manager)
- 2. Name of Firm** RM Enterprise Limited
- 3. Name of Staff** Rodney. M. Mshali
- 4. Date of Birth** 2nd of November 1990
Nationality Malawian
- 5. Education** 2008-2016
 - MSc in Project Management, University of Bolton, UK
 - BSc Civil Engineering, University of Malawi, The Polytechnic
 - Certificate Financial Accounting, Insitute of Chartered Accountant of Malawi (ICAM)
- 7. Professional Bodies** Registered Graduate Engineer – Malawi Board of Engineers (MBOE)
Registered Graduate Engineer – Malawi Institute of Engineers (MIE)
Registered Member – South Africa Institute of Civil Engineers (SAICE)
Authorised Autodesk Partner for Malawi – IDEATE Mauritius
- 8. Country of Work Experience** Malawi, Mozambique & Zambia
- 9. Computer Literacy**
 - Autodesk Autocad Infrastructure Suite 2015 (Civil 3D, Revit, Robot Structural Design etc.)
 - Microsoft Project 2013/2016
 - Prokon Structural Software Ver. 2.5
 - Microsoft Office 2016
- 10. Employment Record**

Since Jun 2015	Employer: RM Enterprise Limited & WTM Chirwa and Associates Consulting Engineers
Jun 2014 – Jun 2015	Employer: Burgland Charitas & Espanor Mozambique
Jun 2013 – Jun 2014	Employer: M.A. Kharafi and Sons General Contractors
Jan 2011 – Jun 2013	Employer: MKAKA Construction Company
Jan 2008 – Dec2010	Employer: GM Consultants Chartered Quantity Surveyors

STRUCTURAL ENGINEER/PROJECT MANAGER

GEng. Rodney M. Mshali
MSc. PM; BSc. CEng, Cert. Fin. Acc.

11. Detailed Tasks Assigned

12. Work Undertaken that Best Illustrates Capability to Handle the Tasks Assigned

Name of assignment or project: Design and Construction Supervision of Malawi Bureau of Standards Complex Center

Year: 2016 - 2018

Location: Blantyre, Malawi

Client: Malawi Bureau of Standard & European Union

Main project features: Sismic design, Tremor Isolation Design, Structural and Civil Works design of four storey building divided in four blocks.

Positions held: Deputy Lead Structural Consulting Engineer

Activities performed:

- General project management tasks – Planning and Programming
- Quality Control and Assurance – Materials
- Stormwater and waste water design
- Structural desing of concrete elements
- Production of material Specifications
- Design of Earthworks

Name of assignment or project: Design and Construction Supervision of Ethanol Plant Expansion of PRESSCANE Limited

Year: 2015 - 2016

Location: Chikhwawa, Malawi

Client: PRESSCANE Limited

Main project features: Structural Design of Containment walls, tanks foundations, diaphragm walls, sludge pond, water intake rehabilitation and mechanical steel structural design.

Positions held: Lead Structural Engineer & Project Manager

Activities performed:

- Planning and Scheduling the works.
- Contract Administration.
- Preperation of Bills of Qauntities and Tender Evaluation (Procurement)
- Production of Civil and Structural drawings.
- Preparation of cost estimates.
- Measurement and Certification.

Name of assignment or project: Construction of a Technical College for Espanor in Mozambique

Year: 2013 - 2014

Location: Milange, Mozambique

Client: Burgland Charitas and Esparanga Para Novo Rebento

Main project features: Structural Design and Construction Management (EPC/ Turnkey) and design of ground water supply system.

Positions held: Project Manager/ Project Engineer

Activities performed:

- Planning and programing of works on site
- Prepataion of Materials Scheduled, Bills of Qauntities and Esngineers Estimates.
- Preparation of proposals for Donor Fund Approval.
- Preperation of project schedules and tracking of projet progress.
- Production of structureal and civil engineering drawings
- Measure and certification of works
- Productionn of tender documents, procurement and contract administration

STRUCTURAL ENGINEER/PROJECT MANAGER

GEng. Rodney M. Mshali
MSc. PM; BSc. CEng, Cert. Fin. Acc.

Name of assignment or project: Construction of Thyolo – Thekerani – Muona – Bangula Road

Year: 2012 - 2013

Location: Thyolo, Malawi

Client: Malawi Government, Saudi Fund, OPEC Fund and BADEA Fund

Main project features: Earthworks (Cut/Fill), Stormwater design, Bridge construction, Box Culverts, Shop Drawings.

Positions held: Technical Engineer

Activities performed:

- Planning and programming of works on site.
- Preparation of Contractual claims and correspondences.
- Preparation of cost synopsis and analysis of the project.
- Evaluation of bids from subcontractors.
- Preparation of project schedules and tracking of project progress.
- Production of shop/working drawings for road work, drainage works and designs for camp site building and structures.
- Measurement of works on site and preparation of earthworks quantities.
- Production of technical documents of works methodologies, inception reports and analysis of project specification of materials and works.

Name of assignment or project: Construction And Rehabilitation Of The Upgrading And Re - Habilitation Of D301 From Muyombe Junction To Chama And From Chama To Luangwa River Inclusive Of Chama Urban Roads In Muchinga Province Zambia

Year: 2013-2014

Location: Muchinga, Zambia

Client: Government of Zambia/ Chinese Grant

Main project features: Construction of Box Culverts, Ring Culverts, Earthworks (42000m³), Chip sealing, Stormwater drainage systems.

Positions held: Planning and Logistics Engineer

Activities performed:

- General site supervision of both civil and building works.
- Logistics of cross – border transportation of materials and its associated costs.
- Preparation of cost synopsis and analysis of the project.
- Contract negotiation for additional works and pricing.
- Preparation of project schedules and tracking of project progress

Name of assignment or project: Construction And Rehabilitation Of Gravity Fed Water Schemes In Mulanje District

Year: 2013 - 2014

Location: Mulanje, Malawi

Client: NWDP/ADB

Main project features: Rehabilitation and extension of the water supply systems and construction of concrete storage tanks (5 x 250m³; 2 x 150m³; 3 x 100m³), inclusive of construction of intake weir.

Positions held: Planning and Logistics Engineer

Activities performed:

- General site supervision of both civil and building works.
- Contract management and administration.
- Sourcing and procuring of materials.
- Logistics of cross – border transportation of materials and its associated costs.
- Preparation of cost synopsis and analysis of the project.
- Contract negotiation for additional works and pricing.
- Preparation of project schedules and tracking of project progress

STRUCTURAL ENGINEER/PROJECT MANAGER

GEng. Rodney M. Mshali
MSc. PM; BSc. CEng, Cert. Fin. Acc.

Name of assignment or project: Construction Of Pre – School And Office Block Including External Works (Mozambique)

Year: 2011 - 2012

Location: Mozambique

Client: Burgland Charitas and Espanor

Main project features: Construction supervision of SSB structural construction, civil works, and ground water supply.

Positions held: Assistant Site Agent

Activities performed:

- General site supervision of both civil and building works.
- Contract management and administration.
- Sourcing and procuring of materials.
- Logistics of cross – border transportation of materials and its associated costs.
- Preparation of cost synopsis and analysis of the project.
- Contract negotiation for additional works and pricing.
- Setting out of works and development of boundaries using levels.
- Design of external works with the architectural team.

Name of assignment or project: Construction Of Rumphi - Chitipa Corridor

Year: 2011 - 2012

Location: Rumphi, Malawi

Client: World Bank

Main project features: Earthworks (32800m³), Road Pavement Construction, Chip Sealing works, Stormwater drainage work (culverts and drains).

Positions held: Assistant Planning Agent

Activities performed:

- Material calculation and scheduling.
- Preparation of tender documents and company profiles.
- Contract administration and pricing.
- Procurement of Materials and its related logistics.
- Preparation of contract correspondence and handling of site meetings.

Name of assignment or project: Construction of Semi – Permanent Weigh Stations

Year: 2011 -2011

Location: Blantyre, Linthipe, Rumphi - Malawi

Client: Roads Authority & Road Fund Administrations

Main project features:

Positions held: Assitant Site Agent

Activities performed:

- Civil works – preparation of pavement layers.
- Asphalt surfacing supervision and design.
- Calculation of material quantities and scheduling.
- Preparation of payment certificates and claims.
- Concrete works and drainage systems.
- Weigh station design and analysis.
- Materials testing and identification.
- Contract management and administration.
- Preparation of contract correspondence and handling of site meetings.

STRUCTURAL ENGINEER/PROJECT MANAGER

GEng. Rodney M. Mshali
MSc. PM; BSc. CEng, Cert. Fin. Acc.

Name of assignment or project: Rehabilitation Of Zomba City Roads

Year: 2010 - 2010

Location: Zomba, Malawi

Client: Roads Authority

Main project features: Bitumen Surfacing Works, Stormwater Drainage Works, and Concrete Pavement works.

Positions held: Assistant Site Agent

Activities performed:

- Civil works – preparation of pavement layers.
- Asphalt surfacing supervision.
- Calculation of material quantities and scheduling.
- Preparation of payment certificates and claims.
- Concrete works and drainage systems.
- Materials testing and identification.
- Supervised in - situ test and densities of all pavement layers.
- Contract management and administration.
- Culvert installation and design.
- Marshall Mix design of premix, production and its quality control.
- Scheduling of progress of works, materials and plants.
- Geometric and structural design of the access roads.
- Preparation of contract correspondence and handling of site meetings.

Name of assignment or project: Rehabilitation Of Ndirande – Makhetha Road

Year: 2009 - 2009

Location: Blantyre, Malawi

Client: Roads Authority

Main project features: Bitumen Surfacing Works, Stormwater Drainage Works, Concrete Pavement works and Box Culvert.

Positions held: Assistant Site Agent

Activities performed:

- Civil works – preparation of pavement layers.
- Asphalt surfacing supervision.
- Calculation of material quantities and scheduling.
- Preparation of payment certificates and claims.
- Concrete works and drainage systems.
- Materials testing and identification.
- Contract management and administration.
- Culvert installation and design.
- Marshall Mix design of premix, production and its quality control.
- Scheduling of progress of works, materials and plants.
- Preparation of contract correspondence and handling of site meetings.

STRUCTURAL ENGINEER/PROJECT MANAGER

GEng. Rodney M. Mshali
MSc. PM; BSc. CEng, Cert. Fin. Acc.

Name of assignment or project: Construction Of Staff Houses And Associated External Works For Zomba Central Hospital

Year: 2010 - 2010

Location: Zomba, Malawi

Client: Ministry of Health

Main project features: Construction of Staff Houses, Flats, and access roads for Zomba Central Hospital

Positions held: Assistant Measurement Engineer

Activities performed:

The services included the following components:

- General site supervision of both civil and building works.
- Contract management and administration.
- Sourcing and procuring of materials.
- Logistics of cross – border transportation of materials and its associated costs.
- Preparation of cost synopsis and analysis of the project.
- Contract negotiation for additional works and pricing.
- Setting out of works and development of boundaries using levels.
- Design of external works with the architectural team.
- Scheduling of progress of works, materials and plants.
- Preparation of contract correspondence and handling of site meetings.

Name of assignment or project: Construction of John Hopkins Office Block and Its Associated External Works

Year: 2008

Location: Blantyre, Malawi

Client: John Hopkins

Main project features: Construction of a four storey office building using reinforced concrete.

Positions held: Assistant Quantity Surveyor

Activities performed:

- Preparation of bidding document and contract documents for all contracts.
- Estimation of costs of construction for clients.
- Scheduling of progress of works and materials.
- Site inspection and joint measurements of works.
- Verification of contractor's claims and valuations.
- Property valuations and development of proposals for funding institutions.

13. Certification

I, the undersigned, certify that to the best of my knowledges and belief, this CV correctly describes me, my qualifications, and my experience. I understand that any wilful misstatement described herein may lead to my disqualification or dismissal, if engaged.



Signature of staff member or authorized representative of the staff

30.11.2016

Day/Month/Year



University
of Bolton

RODNEY MASUZGO MSHALI

has been admitted to the degree of

Master of Science

having followed an approved postgraduate programme in

Project Management

September 2016



Professor G E Holmes DL
Vice Chancellor



Rodney Mshali


*having satisfied the examiners has this day been awarded
the degree of*

**BACHELOR
of
SCIENCE
in
CIVIL ENGINEERING**

With Credit


Registrar

28th February 2013


Vice-Chancellor

THE SOUTH AFRICAN INSTITUTION OF CIVIL ENGINEERING

Est 1903



This certifies that

Rodney M Mshali

is duly elected as

Associate Member

Membership Number: 201500354

of

The South African Institution of Civil Engineering

on

25 April 2015

**Issued under the seal of the Institution
Under resolution of the Council**



President
Malcolm Pautz PrEng



Chief Executive Officer
Manglin Pillay PrEng





Legal Documents





COR14.3: Registration Certificate

Registration Number: 2017 / 065985 / 07
Enterprise Name: CHALLENG GROUP

ENTERPRISE INFORMATION

Registration Number: 2017 / 065985 / 07
Enterprise Name: CHALLENG GROUP
Registration Date: 14/02/2017
Business Start Date: 14/02/2017
Enterprise Type: Private Company
Enterprise Status: In Business
Financial Year End: February

Addresses: POSTAL ADDRESS
57 BRAESIDE ROAD
SEAVIEW
SEAVIEW
KWA-ZULU NATAL
4093

ADDRESS OF REGISTERED OFFICE
57 BRAESIDE ROAD
SEAVIEW
SEAVIEW
KWA-ZULU NATAL
4093

ACTIVE MEMBERS / DIRECTORS

Surname and First Names	Type	ID Number / Date of Birth	Appointment Date	Addresses
SITHOLE, NKULULEKO NTOBEKO	Director	9709305734086	14/02/2017	Postal: 57 BRAESIDE ROAD, SEAVIEW, SEAVIEW, KWA-ZULU NATAL, 4093 Residential: 57 BRAESIDE ROAD, SEAVIEW, SEAVIEW, KWA-ZULU NATAL, 4093
KAPHWELEZA BANDA, CHIKONDI JAMAL	Director	1984-12-06 12:00:01	14/02/2017	Postal: 57 BRAESIDE ROAD, SEAVIEW, SEAVIEW, KWA-ZULU NATAL, 4093 Residential: 57 BRAESIDE ROAD, SEAVIEW, SEAVIEW, KWA-ZULU NATAL, 4093





Tax Clearance Certificate Number:

0700/1/2017/A000740530

Tax Clearance Certificate - Tender

Enquiries

0800 00 SARS (7277)

Approved Date

2017-02-16

Expiry Date

2018-02-16

Company registration number 2017/065985/07

Income Tax 9047834255
CHALLENG GROUP

Trading Name CHALLENG GROUP

It is confirmed that, on the basis of the information at the disposal of the South African Revenue Service (SARS), the above-mentioned taxpayer has complied with the requirements as set out in the Tax Administration Act.

This certificate is valid until the expiry date reflected above, subject to the taxpayer's continued tax compliance.

To verify the validity of this certificate, contact SARS through any of the following channels:

- via eFiling
- by calling the SARS Contact Centre
- at your nearest SARS branch

This certificate is issued in respect of the taxpayer's tax compliance status only, and does not address any other aspect of the taxpayer's affairs.

This certificate is issued free of charge by SARS

SWORN AFFIDAVIT – B-BBEE EXEMPTED MICRO ENTERPRISE

FULL NAME AND SURNAME	NKULULEKO NTOBEKO SITHOLE
IDENTITY NUMBER	9709305734086

Hereby declare under oath as follows:

- 1) The contents of this statement are to the best of my knowledge a true reflection of the facts.
- 2) I am the member/director/owner of the following enterprise and am duly authorised to act on its behalf:

ENTERPRISE NAME	CHALLENG GROUP
TRADING NAME	CHALLENG GROUP
REGISTRATION NUMBER	2017/065985/07
ENTERPRISE ADDRESS	57 BRAESIDE ROAD SEAVIEW 4093, KWA-ZULU NATAL

- 3) I hereby declare that:
 - The enterprise is 100% black owned;
 - The enterprise is 0% black woman owned;
 - Based on the financial statements and other information available on the **2016** Financial year, the income did not exceed R10 000 000.00 (ten million rand);


B-BBEE level contributor

100% Black owned	LEVEL ONE (135% B-BBEE procurement recognition)	X
More than 51% Black owned	LEVEL TWO (125% B-BBEE procurement recognition)	
Less than 51% Black owned	LEVEL FOUR (100% B-BBEE procurement recognition)	

- 4) The entity is an empowering supplier in terms of the **DTI** Codes of Good Practice.
- 5) I know and understand the contents of this affidavit and I have no objection to take the prescribed oath and consider the oath binding on my conscience and on the owners of the enterprise which I represent in this matter.
- 6) The sworn affidavit will be valid for a period of 12 months from the date signed by the commissioner.

DEPONENT SIGNATURE: 

DATE: 24 FEBRUARY 2017

 24/2/2017

Commissioner of Oaths

COMMISSIONER OF OATHS

LARA JOY SIMS - HANDCOCK

PROFESSIONAL ACCOUNTANT P.A.

25A JAN SMUTS AVENUE, WINSTON PARK

AREA PINETOWN REF: 9/1/8/2 (R/O) KZN 12/06/2012



Works Gallery

**Flash drive included in
Document Pack**

